

Long before there were airplanes or helicopters, there were flying toys. This one — a simple flying propeller — was popular in the 1800's. Often they were hand-carved wood. Propellers like these can fly to a height of 20 feet or more.

Difficulty level: Easy

What you will need:

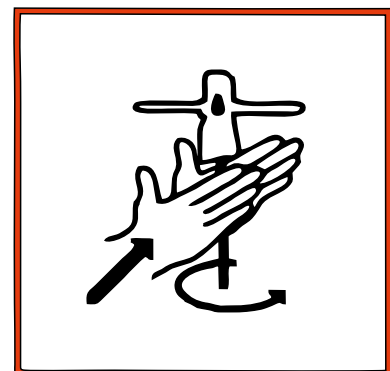
- Card/Paper
- Scissors
- White glue
- Superglue
- 1/8" Dowelling x 6"

Assembly Instructions

Note: THERE ARE TWO WAYS OF PRINTING.

1 Print onto photocopy thickness paper (80gsm) on then glue both blade and washer to Cereal box thickness card.

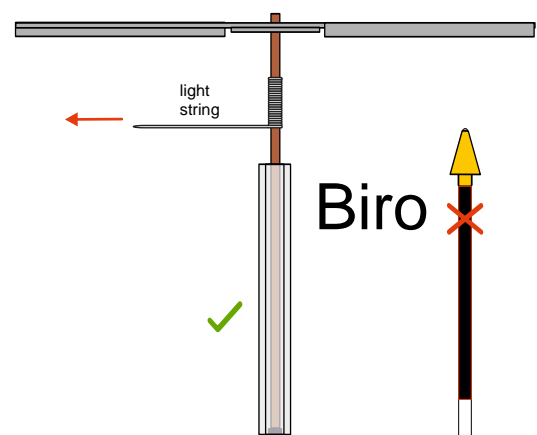
2. Print straight onto the thickest card that your printer will take (most will take 160gsm) and then double up (glue) with same card thickness as backing

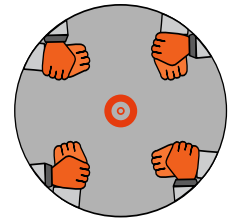
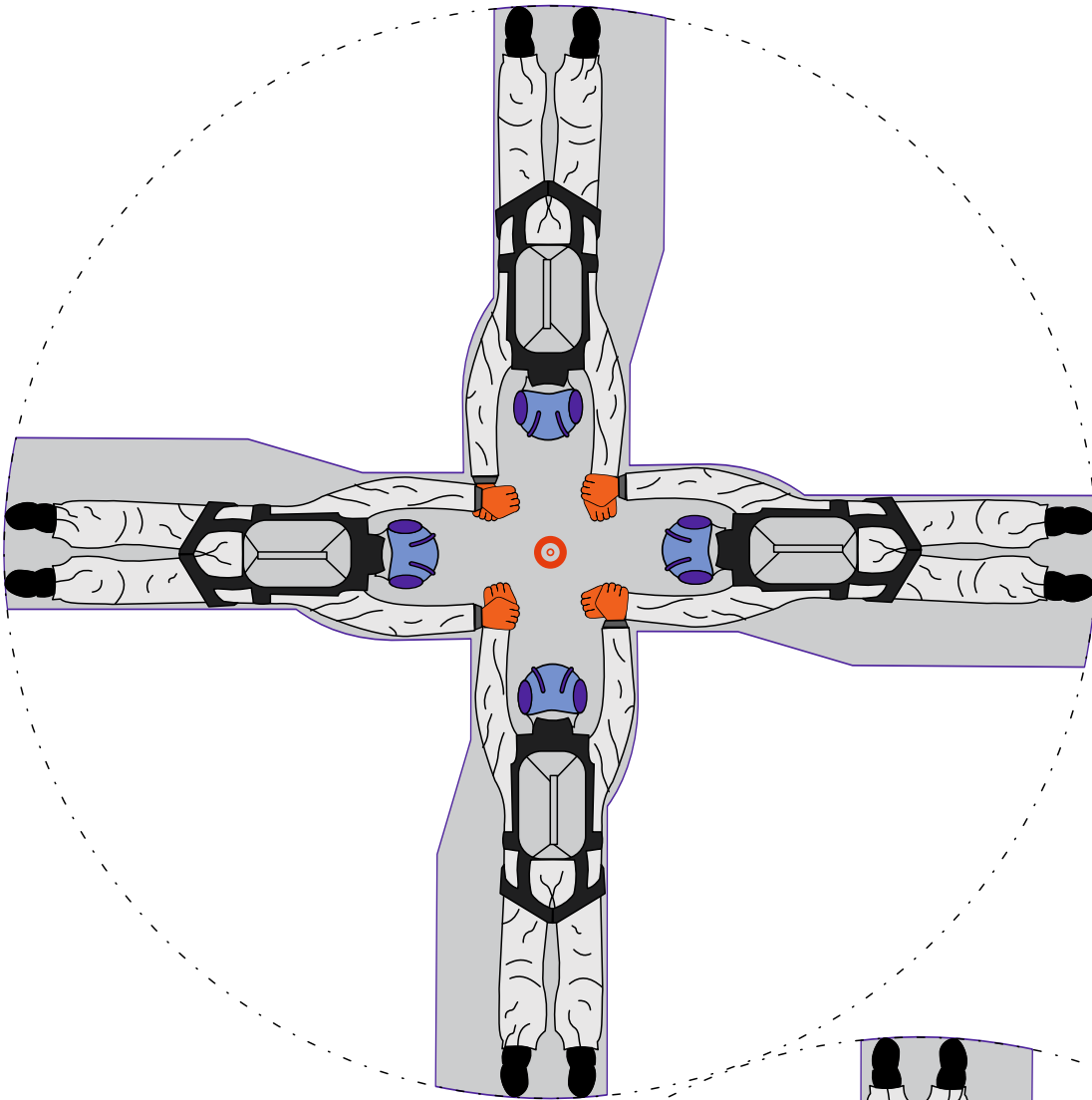


To assemble your model,

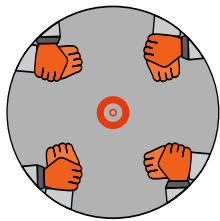
- ⦿ Cut out propeller and washer.
- ⦿ Glue washer to propeller as shown.
- ⦿ Drill a hole through the centre of the propeller just large enough for dowelling to pass through snugly.
- ⦿ Cut a piece of dowelling 6 inches long.
- ⦿ Slide propeller onto dowel and use super glue to glue in place 'An 1/4" inch from end of dowel as shown.
- ⦿ When glue has dried, bend the blades of the propeller into a curved wing shape.
- ⦿ To make the propeller fly, hold the dowel between the palms of your hands. Slide your right hand forward rapidly and release. The propeller will fly upward like a helicopter.

or





washer



washer

